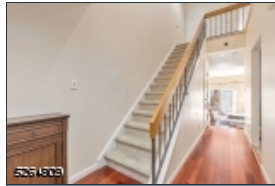
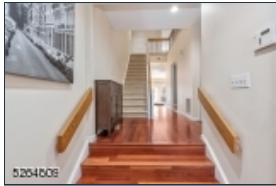




5264809



Welcome to the wonderful Madison Common Complex. This Devonshire model is in move-in condition with Mahogany floors on the first floor, solid wood doors and all three baths have been updated. The step down spacious living room has a wood burning fireplace with a dining room combo open concept. The eat in kitchen has plenty of cabinets with a large pass through opening to the living room/dining room. The Primary bedroom en-suite has two large double closets and a gorgeous updated bath with a stall shower. Also, the laundry is on the second floor. The spacious private Trex deck is off of the living room for your morning coffee overlooking the yard. You will love the huge outdoor heated swimming pool, club house with a fitness center, tennis courts and a walking path around the interior of the complex. The entry to the garage is from the foyer, so you don't have to go outside. Located close to the beautiful and vibrant center of town, you will love the restaurants and being located so close to the midtown direct train and convenience to the highways and airport.

## 69 Derby Ct\*

Madison Boro\* (2318)

\$585,000

**MLS#:** 3885180  
**# Rooms:** 5  
**# Bedrooms:** 2  
**# FullBaths:** 2  
**# HalfBaths:** 1  
**Lot Size:** 25X50\*  
**Acres:** 0.03\*  
**Tax Year:** 2023  
**Taxes:** \$8,767  
**Year Built:** 1984

**Style:** Multi Floor Unit, Townhouse-Interior

**Garage:** 1 / Attached Garage, Garage Door Opener, Inside Entrance

**Basement:** No / Crawl Space

**Heat:** 1 Unit, Forced Hot Air

**Cool:** 1 Unit, Central Air

**Fireplace:** 1 / Living Room, Wood Burning

**Directions:** Park Ave. to Chateau Thierry to Madison Common entry on left.



EQUAL HOUSING  
OPPORTUNITY