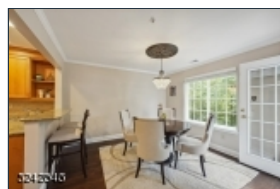
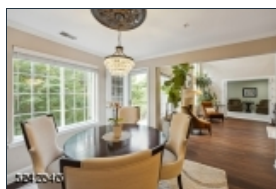
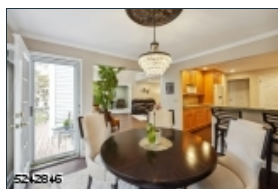
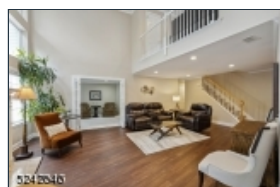
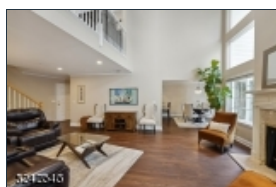
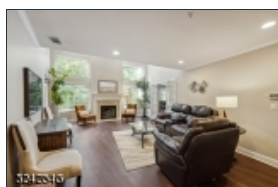




5242846



Easy living in this beautifully renovated sun filled 3 bedroom, 3 full bath condo perfectly set in the sought after Sutton Woods community with first floor bedroom. Rarely on the market, this Glenham model is sure to impress with lovely woods and river views. The two story family room with cathedral ceilings, gas fireplace and a two story wall of windows is truly the perfect space to relax and enjoy your great views. The updated kitchen with breakfast bar has plenty of cabinets, and a large pantry and the dining room opens to the kitchen and family room. A first floor bedroom with plenty of closets has an updated bath and is currently being used as an office. A lovely private deck is off the dining room and allows you to enjoy the outdoors while sipping your morning coffee. Continue to the second level which features two bedrooms, two full baths and a loft currently being used as an office. This loft is a versatile space and has many possibilities. The primary bedroom boasts a walk in closet and en-suite updated bathroom, and plantation shutters. Additional features include luxury vinyl flooring, 3M sun control window film in the family room, dining room and first floor bedroom, custom closet system in the primary bedroom and guest bedroom and much more. This sought after community features a pool, tennis courts, and easy access to NYC trains, major airports and highways, restaurants, shopping and Chatham's schools are ranked high. Do not miss this special home!

271 Riveredge Dr*

Chatham Twp.* (2305)

\$875,000

MLS#: 3863455
Rooms: 7
Bedrooms: 3
FullBaths: 3
HalfBaths: 0
Lot Size: 0.0000 AC*
Acres: 0.00*
Tax Year: 2022
Taxes: \$11,583
Year Built: 1993

Style: Multi Floor Unit, Townhouse-Interior

Garage: 1 / Built-In Garage, Garage Door Opener, Inside Entrance

Basement: No /

Heat: 1 Unit, Forced Hot Air

Cool: 1 Unit, Central Air

Fireplace: 1 / Family Room, Gas Fireplace

Directions: Passaic Ave to Kent Place BLVD to Riveredge Dr



EQUAL HOUSING
OPPORTUNITY