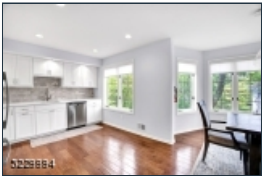




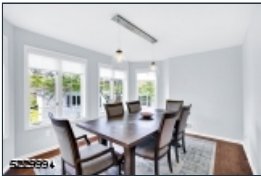
5229994



5229994



5229994



5229994



5229994



5229994



5229994

Welcome to your dream home! This stunning 2-bedroom, 2-bathroom townhouse offers the ideal blend of style, functionality, and convenience. Thoughtfully designed living spaces, this home is perfect for those seeking contemporary living in a vibrant neighborhood. The combination of the white kitchen, stainless steel appliances, and hardwood floors creates a harmonious blend of contemporary design and natural elements, resulting in a visually stunning and functional culinary haven. The expansive Primary bedroom suite and the versatile guest/home office room offer luxurious and flexible spaces to accommodate both relaxation and professional needs. See why Sutton Woods in Chatham, NJ is the most highly sought-after residential community in the area and known for its picturesque setting, well-maintained grounds, and top-rated schools.

**136 Terrace Dr\***  
Chatham Twp.\* (2305)

**\$550,000**

**MLS#:** 3852144  
**# Rooms:** 6  
**# Bedrooms:** 2  
**# FullBaths:** 2  
**# HalfBaths:** 0  
**Lot Size:** 0.369 AC\*  
**Acres:** 0.37\*  
**Tax Year:** 2022  
**Taxes:** \$7,081  
**Year Built:** 1989

**Style:** Multi Floor Unit, Townhouse-End Unit

**Garage:** 1 / Built-In Garage, Garage Door Opener, Inside Entrance

**Basement:** Yes / Finished

**Heat:** 1 Unit, Forced Hot Air

**Cool:** 1 Unit, Central Air

**Fireplace:** 1 / Wood Burning

**Directions:** River Road to Mount Vernon to Terrace Drive Sutton Woods Entry



EQUAL HOUSING  
OPPORTUNITY