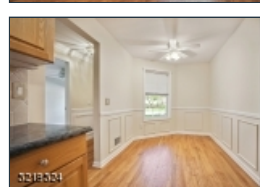
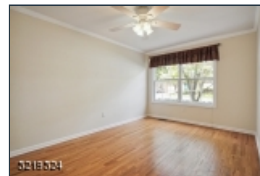
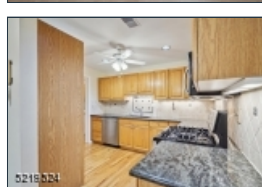
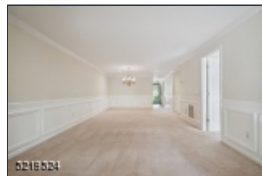
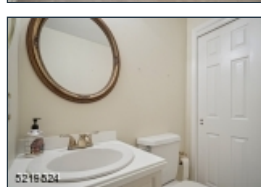
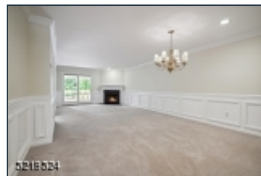




5219524



Desirable Convent Station location, the prestigious Moore Estate offers maintenance free living and a beautifully landscaped quiet oasis in historic Morris Township. This 2 Bedroom Ranch style unit offers one floor living with a FIRST FLOOR PRIMARY BEDROOM that features a walk-in closet, en suite bath with spa tub and shower. Ideal for entertaining and easy living, the first floor offers a spacious dining area and an open living room with wainscoting panels, gas fireplace and sliders to a private covered deck. The cozy eat-in kitchen has granite counters, stainless appliances, and hardwood flooring that extends into a spacious laundry room with built-in cabinetry for plenty of storage, and easy access into your private garage. Powder room and bonus Den/Office offers an option for a second Bedroom on main floor. Ideal for guests, the huge, finished lower level offers private living with a third Bedroom/Office, Full Bath, large Family Room, and a large Walk-In Closet. Large utility room with open shelving for plenty of additional storage. Amenities include a newer outdoor pool, tennis courts and a fabulous club house with kitchen facilities, and Fitness Center. Close to NYC train, highways, hospital, shopping, theater, parks and great restaurants. The sellers have paid the deck assessment in full.

25 Cadence Ct*

Morris Twp.* (2324)

\$575,000

MLS#: 3842926
 # Rooms: 6
 # Bedrooms: 2
 # FullBaths: 2
 # HalfBaths: 1
 Lot Size: 0.031 AC*
 Acres: 0.03*
 Tax Year: 2022
 Taxes: \$8,324
 Year Built: 1993

Style: First Floor Unit, Multi Floor Unit, Townhouse-Interior

Garage: 1 / Attached Garage, Garage Door Opener, Inside Entrance

Basement: Yes / Finished, Full

Heat: 1 Unit, Forced Hot Air

Cool: 1 Unit, Central Air

Fireplace: 1 / Gas Fireplace, Living Room

Directions: South Street to Woodland Ave. to Pippins Way to right on Cadence Court unit on right.



EQUAL HOUSING
OPPORTUNITY