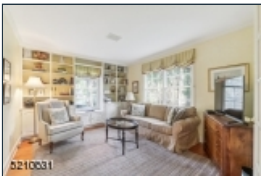
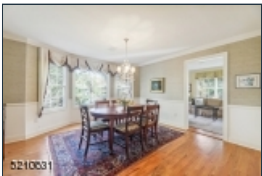
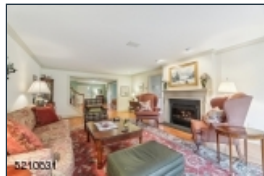
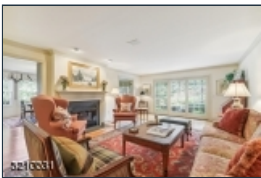
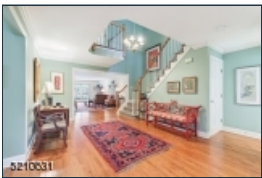




5210831



Enjoy comfort, convenience and maintenance free living at its finest in this elegant beautifully appointed Moore Estate Taylor end unit, that is spacious and sun drenched with a versatile open floor plan. A gracious two story foyer invites you into this home with gleaming hardwood floors that continue throughout the first floor. A living room with gas fireplace has french doors that lead you onto the private patio, a perfect space to sip your morning coffee and relax. Just off the living room is a den that opens to a formal dining room with butler's pantry. The eat in kitchen features a center island and enjoys many updates including newer top of the line stainless steel appliances, sink, back splash and lovely moldings. Just off the kitchen is a spacious deck a second outdoor space to enjoy barbecuing and relaxing. Continue to the second level and you are sure to enjoy the oversized primary bedroom with cathedral ceilings, arched windows, his and her walk in closets, ensuite bath with new shower and fixtures, another bedroom, a spacious office with built ins, which easily could be a 3rd bedroom, hall full bath and laundry room. The finished basement is a great living space with so many possibilities. Do not miss this special home just minutes from many dining options, vibrant downtowns of Morristown and Madison, NYC trains, shopping and so much more. Amenities at Moore Estate include Club house with kitchen facilities, fitness Center, swimming pool and tennis courts.

20 Chadwell Place
Morris Twp.* (2324)

\$970,000

MLS#: 3837359
Rooms: 10
Bedrooms: 2
FullBaths: 3
HalfBaths: 1
Lot Size: 0.051 AC*
Acres: 0.05*
Tax Year: 2022
Taxes: \$17,341
Year Built: 1993

Style: Multi Floor Unit, Townhouse-End Unit

Garage: 2 / Attached Garage, Garage Door Opener, Inside Entrance

Basement: Yes / Finished-Partially, Full

Heat: 1 Unit, Forced Hot Air, Multi-Zone

Cool: 1 Unit, Central Air, Multi-Zone Cooling

Fireplace: 2 / Living Room, See Remarks

Directions: Woodland Ave to Pippins Way to Chadwell Place

