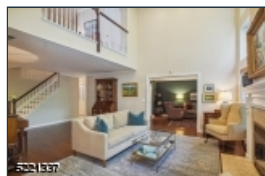
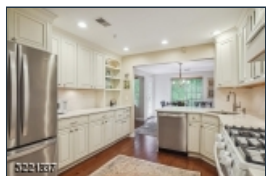




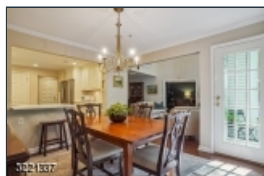
5221337



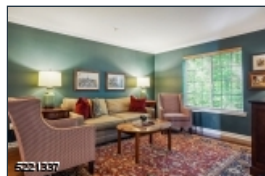
5221337



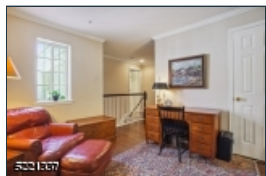
5221337



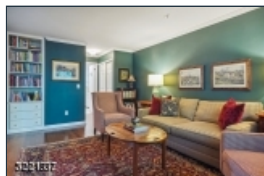
5221337



5221337



5221337



5221337

Enjoy easy living in this beautifully updated sun filled 3 bedroom, 3 full bath condo perfectly located in the sought after Sutton Woods community. Rarely on the market, this Glenham model is sure to impress with woodland views from the two-story family room with cathedral ceilings, a wall of large windows and a gas fireplace. It is the perfect space to relax and enjoy a cozy fire with outdoor views. The white updated kitchen features quartz counters, plenty of cabinets, a breakfast bar and a large pantry. The dining room opens to the kitchen and the family room. A first floor bedroom with a new full bath is currently being used as a den. A lovely private deck is off the dining room and allows you to enjoy the outdoors while sipping your morning coffee and tending to your herbs and beautiful container plantings. Continuing to the second level there are two bedrooms, two tastefully renovated full baths and a loft. The primary bedroom boasts an ensuite bath with shower and freestanding tub plus a walk-in closet. The loft, currently used as an office, is a great versatile space. This home boasts many closets, some organized by The Container Store, a new tankless water heater, all new bathrooms and a newly renovated kitchen. This community features a pool, tennis courts and easy access to NYC trains, major airport, major highways, restaurants shopping and many vibrant towns including Summit, Chatham, and Madison. All Chatham's schools are among the highest rated in the state.

267 Riveredge Dr*

Chatham Twp.* (2305)

\$889,000

MLS#: 3844705
Rooms: 7
Bedrooms: 3
FullBaths: 3
HalfBaths: 0
Lot Size: 0.0000 AC*
Acres: 0.00*
Tax Year: 2022
Taxes: \$10,913
Year Built: 1993

Style: Multi Floor Unit

Garage: 1 / Attached Garage, Inside Entrance

Basement: No /

Heat: 1 Unit, Forced Hot Air

Cool: 1 Unit, Ceiling Fan, Central Air

Fireplace: 1 / Family Room, Gas Fireplace

Directions: Kent Place Blvd to Riveredge Dr



EQUAL HOUSING
OPPORTUNITY