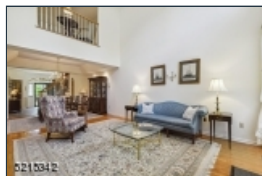
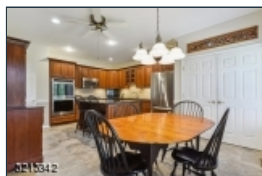
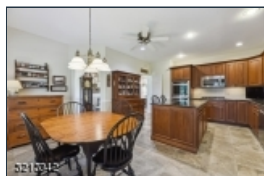
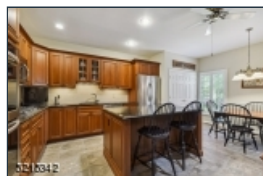




5215342



Enjoy comfort, convenience and maintenance free living at its finest in this beautifully appointed home located in the sought after Moore Estate community perfectly located near major highways, airport, trains to NYC, shopping, restaurants, and the thriving downtowns of Morristown and Madison. This home boasts a first floor primary suite with ensuite bath and plenty of closet space, a newer eat-in kitchen totally renovated with plenty of cherry cabinetry, granite counters and top of the line stainless steel appliances. A wonderful open floor plan that includes a dining room with tray ceiling that opens to the living space with a soaring two story ceilings and gas fireplace and a french door leading to the private patio with lovely views. Continue to the second level that features two bedrooms and a jack and jill bath and a wonderful loft space perfect for an office, sitting room or den. A finished basement with office, recreation room and plenty of storage offers another great living space to enjoy. Many updates include newer HVAC, roof, hot water heater, garage door, chimney liner, plantations shutters, and extensive new landscaping in the back and so much more. Enjoy all the amenities Moore Estate offers including a pool, tennis courts, fitness center and Club house with kitchen facilities.

30 Pippins Way*

Morris Twp.* (2324)

\$850,000

MLS#: 3839224
Rooms: 9
Bedrooms: 3
FullBaths: 3
HalfBaths: 1
Lot Size: 0.045 AC*
Acres: 0.04*
Tax Year: 2022
Taxes: \$14,136
Year Built: 1993

Style: Multi Floor Unit, Townhouse-Interior

Garage: 1 / Detached Garage, Garage Door Opener, On-Street Parking

Basement: Yes / Finished-Partially, Full

Heat: 1 Unit, Forced Hot Air

Cool: 1 Unit, Central Air

Fireplace: 1 / Gas Fireplace, Living Room

Directions: Woodland Road to Pippins Way



EQUAL HOUSING
OPPORTUNITY