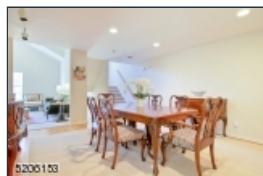
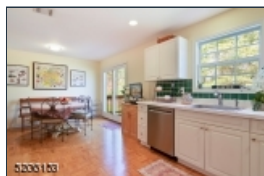




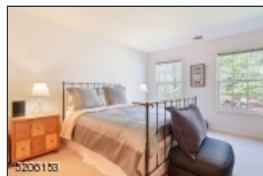
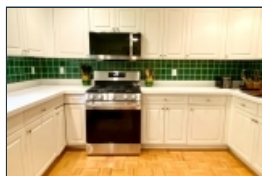
5206153



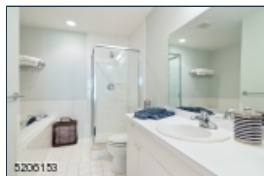
5206153



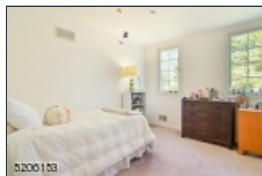
5206153



5206153



5206153



5206153

Welcome to 61 Pippins Way! Enjoy maintenance-free living in this unique 2-bedroom unit, with a main floor master suite; nestled in a private corner of the highly desirable MOORE ESTATE. The side entrance and premium location provide serene views of the grounds and tranquility. With over 2000 sq ft of living, you will enjoy the large living room, with vaulted ceilings, recessed lighting and gas fireplace. The spacious eat-in kitchen boasts all new stainless-steel appliances, endless counter space and sleek white cabinetry. There's an abundance of natural light beaming through the many windows. The large master suite with large walk-in closet has a jetted tub, shower and large vanity. The oversized formal dining room will surely accommodate and impress all your guests. A powder room and laundry room round out the main floor. Enjoy everything you need on the main floor including the deck, which is just off the kitchen through the French doors. And there is so much more. Upstairs is the second bedroom with a massive walk-in closet and a versatile loft space with high ceilings and sky light, another full bath and an added bonus is the private den. Enter your new home from the garage into a sweet entry way with large coat closet. Close to vibrant downtown Madison and Morristown Green, ideally located close to NJ Transit direct train to NYC, shopping, restaurants, Mayo Arts Center, museums, Morristown Hospital & major commuting highways. WELCOME HOME. 1 Yr Buyer's Warranty Included

61 Pippins Way*

Morris Twp.* (2324)

\$549,000

MLS#: 3842110
 # Rooms: 7
 # Bedrooms: 2
 # FullBaths: 2
 # HalfBaths: 1
 Lot Size: 0.034 AC*
 Acres: 0.00*
 Tax Year: 2022
 Taxes: \$8,322
 Year Built: 1994

Style: Multi Floor Unit

Garage: 1 / Built-In Garage

Basement: No /

Heat: 1 Unit, Forced Hot Air

Cool: 1 Unit, Central Air

Fireplace: 1 / Gas Fireplace, Living Room

Directions: Woodland Avenue to Moore Estate Entrance to Pippins Way. Left into parking lot at 61. Entrance around the corner



EQUAL HOUSING
OPPORTUNITY